

STONEBRIDGE

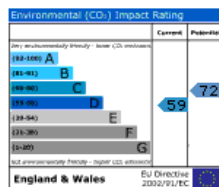
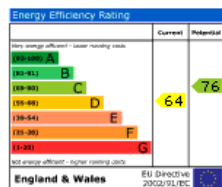
Independent Estate Agents

14 Kiln Drive,
Evercreech, BA4 6DT



A well-proportioned semi-detached house in a cul de sac location.

Asking Price: £189,950



www.stonebridgesouthwest.co.uk

Tel: 01749 330400 Fax: 01749 334370
33 High Street Shepton Mallet BA4 5AQ

Details

- * 3 bed semi-detached.
- * 2 reception rooms
- * Conservatory
- * Kitchen
- * Parking
- * Gardens front and rear

A well-proportioned semi-detached house located in the village of Evercreech. Accommodation comprises: living room, family room/diner, conservatory, kitchen, three bedrooms, family bathroom, gardens front and back and drive way parking.

Outside

To the rear of the property there is a fully enclosed rear garden with side access. To the front there is a lawned area and driveway parking.

Title

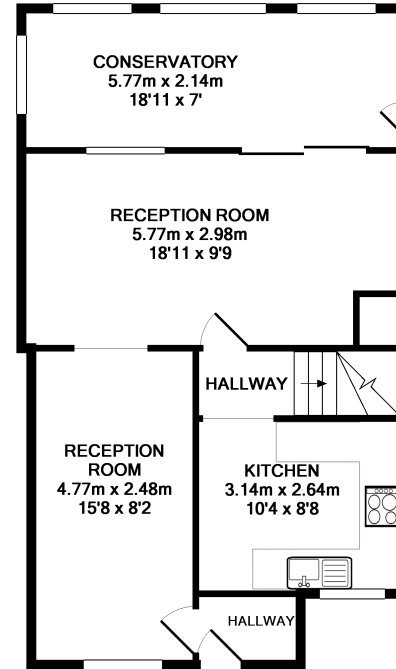
Freehold- This information has been provided by the vendor but we advise it should be confirmed by your solicitor

Services

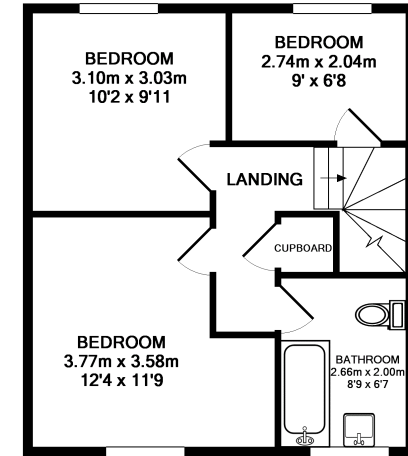
All mains services are connected

Local Authority

Mendip District Council



GROUND FLOOR
APPROX. FLOOR
AREA 54.7 SQ.M.
(589 SQ.FT.)



1ST FLOOR
APPROX. FLOOR
AREA 38.5 SQ.M.
(415 SQ.FT.)

TOTAL APPROX. FLOOR AREA 93.2 SQ.M. (1003 SQ.FT.)
Measurements are approximate. Not to scale. Illustrative purposes only
Made with Metropix ©2008

These particulars are set out as a general outline only and do not constitute part of an offer or a contract. All descriptions, dimensions, reference to condition and necessary permissions for use and occupation, warranties and other details are given without responsibility and any intending purchasers should not rely on them as statements or representations of fact but must satisfy themselves by inspection or otherwise as to the correctness of them.